



NAWIC

*As material for the construction of our building, I pledge the agility of my hands, the ability of my mind, and the integrity of my heart.*

## Message From Your President

THE PIEDMONT POST

Thank you all so much for making Women in Construction Week 2018 such a huge success. Please thank WIC Week Chair, Denese Sanders, for putting it all together.

I look forward to representing our chapter at Spring Forum in Durham this year. It is not too late to register. If there is anything you would like me to bring up to the region, please let me know.

*"We are women making a measurable difference."*



### 2017-2018 OFFICERS

**PRESIDENT**  
GRETA GARDNER

**VICE PRESIDENT**  
JEANNE CALLICUTT

**TREASURER**  
ANNE HUTCHINSON

**SECRETARY**  
CAROLINE CARPENTER

**IMMEDIATE PAST-PRESIDENT**  
DENESE SANDERS

**BOARD MEMBERS**  
AMY MONG  
DAWN DWYER

## In This Issue

Message from Your President	1
Board Members	1
Upcoming Events	1
Member Spotlight	2
Meeting Schedule	2
New Members	3
Recap of Last Meeting	3
Chapter News and Announcements	3-4
Events in the Area	4
Contact Information	5

## Upcoming Events

LOCAL EVENT	LOCAL EVENT	SPRING FORUM 2018
Junior Achievement Construction Academy for the GCS 8 <sup>th</sup> Grade Students.	CFMA March meeting on Workforce Development. More information under what is going on around the triad.	Spring Forum is being hosted by the Durham Chapter in Durham, NC on April 6-8, 2018. It will be held at the Durham Hilton Hotel. Registration and hotel information attached
MARCH 13, 2018	MARCH 20, 2018	APRIL 6-8, 2018

MEMBER SPOTLIGHT

# Denese Sanders

Immediate Past President, 2015-2017



*“Get to know each member, ask questions, hold positions and go to conferences. Knowledge is progress and growth. Always support WOMEN!”*

Denese has been in the construction industry since the mid-nineties. She has grown from Receptionist to Administrative Assistant. A few of the many responsibilities she has been includes payroll, safety, maintenance files, invoicing and collections.

She is our chapters Immediate Past President, which she served a two year term, and has been in NAWIC for 13 years. She has held all local key positions for our chapter. Denese has gotten so much out of being a member of NAWIC.

Friendships! Knowledge! And Networking! Has helped her get new jobs. Bravery! – I would have never ever had the courage to hold the positions I have without the encouragement from the chapter members. Even if you fail or don't reach the expectations of others the members don't give up on you. Support! Family!

Outside of NAWIC she enjoys spending time with Martin, her pets and family.

## DATES TO REMEMBER:

FEBRUARY 27 <sup>TH</sup>	BOARD MEETING
MARCH 4-10 <sup>TH</sup>	WIC WEEK
MARCH 8 <sup>TH</sup>	SPONSOR APPRECIATION NIGHT
APRIL 3 <sup>RD</sup>	BOARD MEETING
APRIL 6-8 <sup>TH</sup>	SPRING FORUM
APRIL 12 <sup>TH</sup>	MEMBERSHIP MEETING
MAY 1 <sup>ST</sup>	BOARD MEETING
MAY 10 <sup>TH</sup>	MEMBERSHIP MEETING

### Birthdays & Anniversaries

Shelby Hutchens  
Birthday March 11th

Anne Hutchinson – Member Since  
03/01/1977 (41 Years)

Shelby Hutchens – Member Since  
03/01/1966 (52 Years)

Denese Sanders – Member Since  
04/01/2012 (6 Years)

### SAVE THE DATES

2018 Spring Forum  
2018 Annual Conference  
2018 Fall Conference

Durham, NC  
Orlando, FL  
Williamsburg, VA

April 6-8, 2018  
August 15-18, 2018  
October 12-13, 2018



# March Meeting Recap

Instead of our regular monthly meeting we celebrating WIC Week with a Sponsor Appreciation Night. We could not do what we do without the many that sponsor and support us, from our companies, family, friends, and NAWIC sisters. We especially want to thank Davie Construction Company and Lomax Construction for sponsoring the event.



## Chapter/Region/National News & Announcements

**2017-2018 Committees** – If you are ever interested in being on one of the many committees we have, please let me know. There is always someplace we could use help.

**Spring Forum** – Registration Deadline has been extended to March 15<sup>th</sup>. We will be having a regional winner for the future leader, member of the year, and lifetime achievement award, with the winners to be announced at our Spring Forum. Please have your nominees to me by Monday, March 13, 2018. Please remember that your entries are due to National by June 1. Forms are attached. Thank you.

**2018 Safety Excellence Awards** – It is that time of year. Applications are due to [safety@nawic.org](mailto:safety@nawic.org) by March 31, 2018. Let me know if you have any questions.

**Work Zone Safety Webinar** – April 10, 2018 @ 12:00. National Work Zone Awareness Week is April 9-13. In this webinar, you will learn about the safety measures you can take and rules you can follow to keep everyone safe in work zones.

**Greensboro Chamber of Commerce** – We are now members of the Chamber. Please contact Brenda Smith for details on what is included in the membership. We will keep you up-to-date on the activities that are going on.

**NAWIC Annual Conference** – Registration is now open. 2018 Annual Conference will be held August 15-18, 2018 in Orlando, FL. [http://www.nawic.org/nawic/Annual\\_Conference.asp](http://www.nawic.org/nawic/Annual_Conference.asp).

### **Job Openings:**

Lomax Construction is looking for an Onsite Administrative Position for their upcoming Charlotte Job. Please contact Dawn Dwyer for more information ([ddwyer@lomaxconstruction.com](mailto:ddwyer@lomaxconstruction.com))

GTCC is looking for a construction project manager. Please contact Kate White for more information ([kate.sarahoz3@yahoo.com](mailto:kate.sarahoz3@yahoo.com))

Hilti is looking has many openings (<https://careers.us.hilti.com/en-us>). If you have any questions please contact Amanda Djukic ([Amanda.Djukic@hilti.com](mailto:Amanda.Djukic@hilti.com)).



# WIC Week 2018



Women in Construction Week 2018 turned out to be an amazing week. We were able to gather for lunch around the triad. The job site tour given by Jennifer Hart, Project Manager, at Samet of their Western Guilford Middle School Project was wonderful. I also love when we are able to take the time to appreciate those who have helped us so much with this organization. That was made possible by our Sponsor Appreciation Event. We were also able to bring such joy to the children at the Boys & Girls Clubs in High Point, NC by dropping off all of our donated construction toys & books that we collected. Thanks to East Coast Construction who brought toys and activities, so we were able to spend some time with these amazing kids that day.

*Thank you all so much!*



## *What is going on around the Triad?*

**Greensboro Chamber of Commerce** –We are now members of the Chamber. Please contact Brenda Smith for details on what is included in the membership. We will keep you up-to-date on the activities that are going on.

**GMA** – You can go to [www.mygma.org](http://www.mygma.org) to see all the events that are going on for the month of March.

**Junior Achievement Construction Academy** - This is [Tuesday, March 2018](#) at the Greensboro Swarm Fieldhouse. It is for GCS 8<sup>th</sup> Grade Students. Information and registration is attached.

**CFMA** – A couple of our members are also members of the local "Construction Financial Management Association" here in the triad. Their [March 20, 2018](#) Meeting is about Work Force Development. They are welcoming us to their meeting which is located at Joseph's Restaurant at the Sheraton Four Seasons in Greensboro, NC. They will be having a panel discussion on workforce development for the construction industry. Hear from individuals actively engaged in the promotion of construction trades in our region and learn what you can do to support these efforts. More information and registration is attached. Please contact Robert Coon ([rcoon@scottins.com](mailto:rcoon@scottins.com)) if you have any questions.

**Western Guilford Middle School** – Hosting their 3<sup>rd</sup> Annual Career Day on [Tuesday, April 24<sup>th</sup>, 2018](#). This initiative is a partnership between the Career and Technical Education program at Guilford Middle School, along with the Business Voices. More information and Commitment Form is attached. Please contact Jennifer Taylor ([Jennifer.taylor@hgfloans.com](mailto:Jennifer.taylor@hgfloans.com)) if you have any questions.

If you miss any of the webinars that NAWIC has been doing. Go to <https://www.youtube.com/channel/UCdY1oiMQhyVoT3-SV-e5tZQ> and watch them when you can.

## Contact Information

### NAWIC NEWS

Please send all articles and content recommendations for this chapter to Greta Gardner ([ggardner@davieconstruction.com](mailto:ggardner@davieconstruction.com))

### CONTACT INFO UPDATE

Members can update contact information through the member center which can be found after signing in at [www.nawic.org](http://www.nawic.org).

### IDEAS FOR OUR CHAPTER?

Contact the board members listed on the front page of this newsletter if you have any ideas for the future of our chapter.

### WEBSITE

Visit our website at [nawicpiedmont.org](http://nawicpiedmont.org)

### FACEBOOK

Connect with us on Facebook at [facebook.com/nawicnational](https://www.facebook.com/nawicnational)  
[https://www.facebook.com/chapter109/?ref=aymt\\_homepage\\_panel](https://www.facebook.com/chapter109/?ref=aymt_homepage_panel)

### MAILING ADDRESS

NAWIC PIEDMONT CHAPTER #109  
PO BOX 10974  
GREENSBORO, NC 27404





**I N S P I R E**

# **CONSTRUCTION ACADEMY**

**FOR GCS 8TH GRADE STUDENTS**



**TUESDAY, MARCH 13, 2018**  
**AT THE GREENSBORO SWARM FIELDHOUSE**

HOSTED BY





Work Readiness | Entrepreneurship | Financial Literacy

Dear Community Partner:

A shortage of laborers is putting a major strain on the construction industry. Construction is North Carolina's fastest growing employment category, however, only 3% of students are interested in construction careers. Young people are avoiding construction trade education in school and this could be a detriment to our communities and state in the future.

It is up to us to work together to identify ways to attract young people to the construction industry where they can earn a solid income, develop a stable career, and potentially start a business of their own hiring others. We think the first step is creating awareness and interest in students for construction careers before they start high school.

On March 13, 2018, Junior Achievement, with Guilford County Schools, is holding an event called JA Inspire: Construction Academy. The goal is to expose 500 8<sup>th</sup> grade students to 25+ vendors and hands-on activities that show students the many career options within the construction industry. This is our opportunity to create a spark in young people for the industry!

What we know is that 1 in 3 Junior Achievement Alumni credit Junior Achievement for their career choice. Partnering with us for JA Inspire: Construction Academy is a needed step to begin changing the dynamics for this growing industry in our region, state and nation.

Please join us in sharing what a career in the construction industry can offer!

Thank you,



*Jacqueline M. Wall*  
Jacqueline McCracken Wall  
President and CEO  
Junior Achievement of the Triad



*Sharon L. Contreras*  
Dr. Sharon Contreras  
Superintendent  
Guilford County Schools



## JUNIOR ACHIEVEMENT OF THE TRIAD MISSION:

Junior Achievement of the Triad (JA) is dedicated to inspiring and preparing young people to succeed in a global economy. Our goals are to: 1) help students foster skills in work-readiness, financial literacy, and entrepreneurship; 2) bridge the gap between what students learn in the classroom and how that knowledge applies in the real world; and 3) use experiential learning to inspire youth to dream big and reach their full potential. With more than 50 years of experience, we are dedicated to giving young people the knowledge and skills they need to own their economic success. With the help of more than 600 volunteers, JA impacts approximately 16,500 students across 118 schools annually. We primarily serve public school students with 60% of our target population being Title I institutions.



## JUNIOR ACHIEVEMENT CONSTRUCTION ACADEMY GOAL:

The goal of the Junior Achievement Construction Academy is to help GCS 8th grade students recognize the career options available within the construction industry. The construction industry has been on the rise for the past few years and is expected to continue to grow in 2017. Despite this growth, 70% of contractors say that they are having a difficult time finding qualified workers or professionals to fill the growing number of positions. This misalignment between the number of available jobs and the number of skilled workers will continue to be an issue the construction industry will face. Construction industry jobs offer lucrative career opportunities for young people emerging into the workforce.

JA of the Triad collaborated with JA of Southeastern Michigan and Sachse Construction to learn from their Construction Academy held in the fall of 2016. The photos used in this booklet are from the 2017 Sachse Construction Academy.



## FORMAT OF THE EVENT:

The event will be held on Tuesday, March 13, 2018. 250 students will attend in the morning and 250 students in the afternoon. The event will consist of 25 hands-on booths run by different tradespeople as well as a demonstration of construction equipment outdoors. Below are examples of the types of booths we will recruit.

- Carpentry (Rough and Finish)
- Ceramic Tile
- Concrete
- Electrical
- Fire Suppression
- HVAC
- Maintenance
- Masonry
- Mechanical
- Painting
- Plumbing
- Restoration (Disaster/Historic)
- Roofing
- Structural Steel



## GCS SCHOOLS INVITED TO CONSTRUCTION ACADEMY:

The target population for the JA Inspire: Construction Academy is 400-500 8th grade students from the following Guilford County Middle Schools:

### 1st Session (8:50am to 11:30am)

Mendenhall Middle School  
Jackson Middle School  
Allen Middle School  
Western Middle School

### 2nd Session (10:50am to 1:30pm)

Hairston Middle School  
Kiser Middle School  
Swann Middle School



Each school will be invited to send 100 of their Career and Technical Education (CTE) students for the event. Junior Achievement requests that schools send one chaperone for every 10-12 students to the event. Chaperones will include principals, assistant principals, counselors, CTE teachers, Career Development Coordinators, and parents.

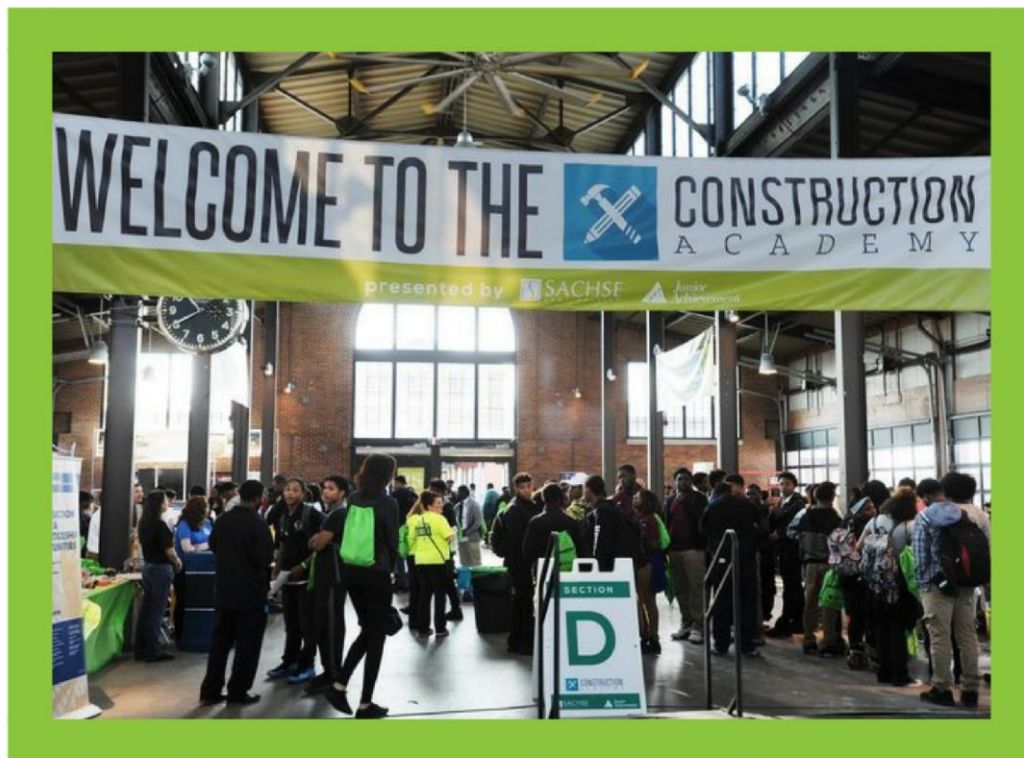
These middle schools were selected by the CTE department of GCS as the best schools to target for our inaugural year of this event.

# SCHEDULE - TUESDAY, MARCH 13, 2018:

8:50am	Session 1 students arrive
9:00am - 11am	Session 1 rotations (student groups visit 6 stations)
10:50 am	Session 2 students arrive
11:00am - 11:30am	All students have lunch in bleachers Students grouped by school Chick-fil-a to donate lunch
11:30am	Session 1 students depart back to schools
11:30am - 1:30pm	Session 2 rotations (student groups visit 6 stations)
1:30pm	Session 2 students depart back to schools

8th grade students will be placed in groups of 10-12 students. Each group will have a chaperone travel with them. Students will have color coded name tags to indicate school they attend. On the back of their name tag, students will have their 6 station rotation listed. Students will visit 6 stations during their session.

There will be four groups of 6 stations each to accommodate 240-288 students per session.







# CONSTRUCTION ACADEMY SPONSORSHIPS

## PRESENTING SPONSOR - \$10,000

- Exclusive media opportunities to include news channel interviews and press releases to all local media outlets
- Provide speaker at lunch during Construction Academy for 500 students
- Prominent logo placement on Construction Academy welcome banner
- Prominent logo placement on t-shirts to be distributed to all participants
- Prominent logo placement on sponsor boards at the Construction Academy
- Placement of logo on JA of the Triad website along with photos of the event
- Social media promotion to include Facebook, Twitter, Instagram, and LinkedIn
- Logo included in JA staff email signature from 2/1/18 to 3/13/18 as our presenting sponsor of the Construction Academy

## HOST SPONSOR - \$7,500

- Exclusive media opportunities to include news channel interviews and press releases to all local media outlets
- Prominent logo placement on Construction Academy welcome banner
- Prominent logo placement on t-shirts to be distributed to all participants
- Prominent logo placement on sponsor boards at the Construction Academy
- Placement of logo on JA of the Triad website along with photos of the event
- Social media promotion to include Facebook, Twitter, Instagram, and LinkedIn
- Logo included in JA staff email signature from 2/1/18 to 3/13/18 as our host sponsor of the Construction Academy

## INDUSTRY SPONSORS - \$5,000

- Logo placement on Construction Academy welcome banner
- Logo placement on t-shirts to be distributed to all participants
- Logo placement on sponsor boards at the Construction Academy
- Placement of logo on JA of the Triad website along with photos of the event
- Social media promotion to include Facebook, Twitter, Instagram, and LinkedIn



# CONSTRUCTION ACADEMY SPONSORSHIPS



## LUNCH SPONSOR - \$5,000

- Logo placement on Construction Academy welcome banner
- Logo placement on t-shirts to be distributed to all participants
- Logo placement on sponsor boards at the Construction Academy
- Placement of logo on JA of the Triad website along with photos of the event
- Social media promotion to include Facebook, Twitter, Instagram, and LinkedIn

## TRANSPORTATION SPONSOR - \$3,500

- Logo placement on Construction Academy welcome banner
- Logo placement on t-shirts to be distributed to all participants
- Logo placement on sponsor boards at the Construction Academy
- Social media promotion to include Facebook, Twitter, Instagram, and LinkedIn

## TRADE SPONSORS - \$2,500

- Company name placement on t-shirts to be distributed to all participants
- Company name on sponsor boards at the Construction Academy
- Social media promotion to include Facebook, Twitter, Instagram, and LinkedIn

## SKILLS SPONSORS - \$1,000

- Company name placement on t-shirts to be distributed to all participants
- Company name on sponsor boards at the Construction Academy



To be a sponsor, please contact  
Cheryl Brandberg at  
[cheryl@triadja.org](mailto:cheryl@triadja.org) or 336.544.0341





# You're Invited!

## Chapter Meeting - Work Force Development

**March 20**  
11:30 a.m. - 1:30 p.m.  
Greensboro, NC

Join us for a panel discussion on workforce development for the construction industry. Hear from individuals actively engaged in the promotion of construction trades in our region and learn what you can do to support these efforts.

*Joseph's Restaurant- Sheraton Four Season • 3121 West Gate City Boulevard  
Greensboro, NC 27407*

### Registration:

Click [here](#) to register for this event. If you have any questions please contact Kay Swofford at [cfma@conferenceresourcesnc.com](mailto:cfma@conferenceresourcesnc.com) or (336) 430-4264.

### Pricing for event:

Members - Free  
Non-members - \$15.00

## Panelists



### Jennifer Allan

*AC Corp*

Jennifer represents [Guilford Apprenticeship Partners](#) serving Guilford County Schools. For the past 20 years, she has been involved in the creation or growth of HR departments in various sectors including commercial photography, material handling, manufacturing and construction. She currently serves as HR Director for AC Corp.



### Roddy Craft

*Carolinas Assoc. General Contractors*

Roddy serves as Director of the [CAGC's Build Your Career Program](#) and will discuss the program's goals of promoting the construction industry among middle and high school students in N.C. and S.C. He has extensive experience in the industry and is an expert in membership recruiting and retention, marketing and business ethics.

### AMERICAN HEROES



### Jim Hoffman

*Hoffman Koenig Hering Law Firm*

Jim is Founder and President of [American Heroes for NC](#), a non-profit that works with veterans to help them integrate successfully into society following their military service. He is also a Founding Partner of his law firm that works with businesses to manage complex business risks and disputes, including employment, real estate, contract, finance and fraud.



### Adam Cardin

*Samet Corporation*

Adam will discuss the [Construction Industry Council's](#) efforts to promote NC Students @ Work in Forsyth County Schools. Adam is a graduate of the University of North Carolina at Wilmington and currently serves as a Project Development Manager for Samet Corporation.



March 6<sup>th</sup>, 2018,

Thank you for your consideration as a participant in **the 3<sup>rd</sup> Annual Career Day** taking place at **Western Guilford Middle School** (formerly Guilford Middle) on **Tuesday, April 24<sup>th</sup> 2018**. This initiative is a partnership between the Career and Technical Education program at Guilford Middle School, along with Business Voices. *We are so excited to host this event on the new Western Guilford Middle School campus!*

There are two ways in which you can volunteer your time.

1. Conducting mock job interviews with 8<sup>th</sup> graders and providing them with feedback.
2. Presenting a workshop in a classroom setting on a specific career, job seeking skill or leadership development topic.

On behalf of Western Guilford Middle School and Business Voices, we thank you for considering this request. Please save the date on your calendar and complete the attached Commitment Form. You will be sent a confirmation with more event details when

If you have any questions, please do not hesitate to contact me by phone at 336-252-1020 or e-mail at [jennifer.taylor@hgfloans.com](mailto:jennifer.taylor@hgfloans.com).

Sincerely,

*Jennifer Taylor*

BNI Voices Coordinator  
Success Express Chapter

\*Revised 3/6/18

**Western Guilford Middle School Career Day**  
**Volunteer Commitment Form**

Please respond with the following information or complete this form and return it to  
Jennifer Taylor at [jennifer.taylor@hgfloans.com](mailto:jennifer.taylor@hgfloans.com).

Name of Business/Organization: \_\_\_\_\_

Contact Person: \_\_\_\_\_

Phone Number: \_\_\_\_\_

**Please select from the following:**

\_\_\_\_ I am committed to conducting mock interviews.

\_\_\_\_ I would like to present a workshop to 6th-8th graders on the following subject  
\_\_\_\_\_.

\_\_\_\_ I am strongly interested in participating in the Career Fair but would like to know more.  
Please have someone contact me to discuss.

I commit to volunteering during the following session(s) on Tuesday, April 24<sup>th</sup>:

\_\_\_\_ 12:00 – 12:55pm

\_\_\_\_ 1:00 - 1:55pm

\_\_\_\_ 2:00 – 2:55pm

Please note that you will have to arrive 15 minutes before your session  
begins for a brief volunteer orientation.

*Do not hesitate to call Jennifer Taylor at 336-542-2494, ext. 268 with any  
initial questions that you may have.*

**Thank you for your support!**



**BUILDING CONNECTIONS  
AND INCREASING INCLUSION**

**NAWIC South Atlantic Region  
2018 Spring Forum**

**April 6 - 7, 2018**

**Durham Hilton, 3800 Hillsborough Rd, Durham NC**

Name for badge: \_\_\_\_\_  Member  Non-Member

Company Name: \_\_\_\_\_ Phone: \_\_\_\_\_

Address: \_\_\_\_\_ City, State, Zip: \_\_\_\_\_

Email: \_\_\_\_\_

Emergency Contact: \_\_\_\_\_ Phone: \_\_\_\_\_

**NAWIC MEMBER INFORMATION**

Membership Type: \_\_\_\_\_ Chapter Name: \_\_\_\_\_ Chapter #: \_\_\_\_\_

2017/18 Chapter Officer Position: \_\_\_\_\_ 2017/18 Regional or National Position: \_\_\_\_\_

Past National Officer or Regional Director? Details: \_\_\_\_\_

**AGENDA HIGHLIGHTS**

\*\*Note: Friday AM Sessions replace Summer Leadership; agenda subject to change

**FRIDAY, APRIL 6<sup>TH</sup>**

**SATURDAY, APRIL 7<sup>TH</sup>**

8:30am – 11:30am	Morning Leadership Training	7:15am – 8:15am	Breakfast Buffet
1pm – 3pm	Jobsite Tour (after lunch on own)		Registration & Chapter Sales
3pm – 3:30pm	First Timers Meeting	8:30am – 11:45am	Morning Session
3:30pm – 4:30pm	President’s Meeting	Noon	Lunch & Awards
3:30pm – 4:30pm	VP/President-Elect Meeting	1:15pm – 4:30pm	Afternoon Session
5:30pm – 7pm	Hors D'Oeuvres & 6pm Scavenger Hunt	6:30pm – 10:00 pm	Denim & Diamonds Party

Is this your FIRST South Atlantic Region Forum?

Yes  No

Will you need transport to/from the airport?

Yes  No

Description (add Quantity for calculation)	Rate	Quantity	Total
Member Registration Fee	\$ 175.00		
Non-Member Registration Fee	\$ 200.00		
Late Registration (after March 1, 2018)	\$ 200.00		
Friday Welcome Reception Guest Ticket	\$ 25.00		
Saturday Lunch & Awards Guest Ticket	\$ 40.00		
Saturday Denim & Diamonds Party Guest Ticket	\$ 50.00		
Student Registration Fee	\$ 99.00		
Registration Total			

Mail Registration Form & Payment:

Amy King  
c/o NAWIC Durham Spring Forum  
PO Box 61284  
Durham, NC 27715  
[nawic.sar.events@gmail.com](mailto:nawic.sar.events@gmail.com)

For Online Payment (\*\*Avoid payment processing fees by paying via check and mailing to address above):

<https://www.eventbrite.com/e/2018-nawic-south-atlantic-region-spring-forum-tickets-42646947167>



**BOOK YOUR HOTEL ROOM EARLY!**

Durham Hilton, 3800 Hillsborough Rd, Durham NC 27705

Book online: <http://www.hilton.com/en/hi/groups/personalized/R/RDUDHHF-NAWIC-20180406/index.jhtml> or by phone 1-800-HILTONS (445-8667) Use Group Code **NAWIC**. The room block is available until March 7<sup>th</sup> or until sold out.

**Do Durham in April!!**



# NAWIC



## **BUILDING CONNECTIONS AND INCREASING INCLUSION**

**NAWIC South Atlantic Region  
2018 Spring Forum**

**April 6 - 7, 2018**

**Durham Hilton, 3800 Hillsborough Rd, Durham NC**

**LEADERSHIP TRAINING \* PROFESSIONAL DEVELOPMENT \* NETWORKING**

### **Friday April 6th, 2018**

Registration Opens

- **Leadership Training**

Preliminary Topics:

- **Building Confidence with Two Words – Lisa Fey**
- **Conflict Resolution – Matt Van Sickle**
- **Effective Communication – Denise Corey**
- Lunch on Your Own
- Jobsite tour in downtown Durham
- First Timers
- Chapter President's RAP Session
- President-Elect/Vice President Meeting
- Drop-In Welcome Reception
- Downtown Durham Scavenger Hunt

### **Saturday April 7th, 2018**

- Late Registration, Chapter Sales and Buffet Breakfast
- Association Business
- Construction Outlook for 2018
  - **Betsy Bailey – Carolinas AGC**
- Educational & Professional Development Speakers
  - **Dr. Gail Hayes – The Conduct of Queens - <http://www.handleyourbusinessgirl.com/conductofqueens.html>**
  - **Gracie Johnson Lopez – Unconscious Bias - <https://diversityhrsolutions.com/>**
  - **Lisa Fey – Women Helping Women and Why They Don't - <https://lisafey.com/>**
  - **Denise Corey – The Power, Confidence & Unity of Women - <http://www.denisecorey.com/>**
- ***More to come as time and space allows***
- Awards Luncheon
- Afternoon Session to include speakers from above
- Raffle & Chapter Sales
- Denim & Diamond Buffet Celebration

#### **Quick Tips:**

This conference will consist of Friday Registration, Leadership Training, Welcome Reception, Saturday morning breakfast, association business, speakers and awards lunch followed by afternoon session and Saturday evening is an Denim & Diamonds Buffet Celebration. NAWIC Durham would like guests to come in their jeans and bling! Bling shirts, bling jewelry, bling hats, etc. No need to get all dressed up on Saturday, but we do want to see you "shining"!

All Friday & Saturday events are casual and casual attire is appropriate. The Welcome Reception on Friday evening will include light Hors d'oeuvres and beverages. We have planned a scavenger hunt of downtown Durham with a prize for the winning team. We are encouraging members to enjoy the many awesome restaurants, roof top bars, etc. that downtown Durham has to offer.



**NATIONAL ASSOCIATION OF WOMEN IN CONSTRUCTION  
GUIDELINES – FUTURE LEADER OF THE YEAR**

**Purpose of Award:**

The Future Leader of the Year award was established to recognize outstanding efforts of a new NAWIC member who has been actively involved throughout their first two NAWIC years as of October 2017. This award may only be won once by a member.

**Selection Process:**

The member can be nominated by an individual or chapter who may or may not be in the same chapter as nominee. Nominators are encouraged to contact nominee to ensure accuracy of application. All nomination forms received prior to the deadline will be numbered and reviewed for anonymity (no names, cities, region or chapter numbers) and forwarded to a panel of judges, as selected by the award Chairman.

**Criteria and Method of Judging:**

All nominees must be a member in good standing. Items to be covered on the nomination form and evaluated on a point system will be chapter, regional and national activities. Also included are construction related and community service activities. An essay of 300 words or less, submitted with the nomination form, will be awarded points at the discretion of the judges. The nominee awarded the highest number of points by all judges will be deemed the winner. In case of a tie, two awards would be made in that particular year.

**Deadline and Return Information:**

All paperwork must be received by the NAWIC Office on or before June 1.

Mail forms to the NAWIC office at 327 S. Adams St. Fort Worth, TX 76104 or email to Beth Brooks at [bethb@nawic.org](mailto:bethb@nawic.org).

**Ratings:**

- New Member Recruitment
- Chapter Officer/Board Positions
- Chapter Committees
- Regional Committees/Taskforce
- National Committees/Taskforce
- Chapter Meeting Attendance
- Chapter Sponsored Event Attendance
- NEF Certifications
- Essay

**Award:**

The NAWIC office will prepare and/or purchase appropriate award.

**Notification and Announcement of Winners:**

Winners will be notified by the NAWIC President with announcement of the winners held until after the National Election results are announced.

**Tips for Essay:**

- Do not include the criteria already on the application form. Make your essay stand out!
- Give details and specific examples as to why your nominee should win. Tell the committee how the nominee goes above and beyond normal participation. The selection committee is relying on your words and examples to “see” your nominee’s attributes and contributions.
- Share examples of how your nominee serves as a role model and/or mentor for others.
- Accomplishments that make an impact in our industry.
- Successful nominations have enough details to make the case for the nominee’s achievement.



# Future Leader of the Year

## Nomination Application Form

Committee Use Only

Nominee Code \_\_\_\_\_

*NOTE: It is important to correctly list the nominee's experience with corresponding activities. Listing "served on all chapter committees and chaired most of them" will not be scored.*

Date Nominee Joined NAWIC \_\_\_\_\_

- Nominee is a NAWIC member in good standing
- Nominee has been a member of NAWIC for no more than 2 years (starting with month joined)

How many members has nominee recruited for the 2016-2017 year? \_\_\_\_\_

Chapter Officer/Board Positions Held for 2016-2017 Year:

- Vice President  
  Secretary  
  Treasurer  
  Director  
  Other: \_\_\_\_\_

**Chapter Committees**

	<b>Chaired</b>	<b>Member</b>
Bylaws	_____	_____
Professional Development & Education	_____	_____
Finance	_____	_____
Public Relations & Marketing	_____	_____
Membership	_____	_____
Mentoring	_____	_____
Safety & Health Awareness	_____	_____
WIC Week	_____	_____
Block Kids	_____	_____
CAD Design/Drafting	_____	_____
Others List: _____	_____	_____
_____	_____	_____
_____	_____	_____

**Chapter Sponsored Events**

	<b>Attended</b>
_____	_____
_____	_____
_____	_____
_____	_____

**Regional Committees/Taskforce**

	<b>Chaired</b>	<b>Member</b>
Professional Development & Education	_____	_____
Public Relations & Marketing	_____	_____
Membership	_____	_____
Mentoring	_____	_____
Safety & Health Awareness	_____	_____
WIC Week	_____	_____
Block Kids	_____	_____
Cad Design / Drafting	_____	_____
Others (List): _____	_____	_____
_____	_____	_____



**National Committees/Taskforce**

**Chaired**

**Member**

Professional Development & Education	_____	_____
Public Relations & Marketing	_____	_____
Membership	_____	_____
Mentoring	_____	_____
Safety & Health Awareness	_____	_____
WIC Week	_____	_____
Block Kids	_____	_____
Cad Design / Drafting	_____	_____
Others (List): _____	_____	_____
_____	_____	_____

Nominee has attended \_\_\_\_\_ out of \_\_\_\_\_ chapter meetings for the year 2016-2017.

Nominee has attended the following Regional/National functions for the year 2016-2017:

- Annual Conference
- Regional Fall Conference
- Regional Forum
- Other: \_\_\_\_\_

Has the nominee served in the following positions:

	<b><u>Chair</u></b>	<b><u>Member</u></b>
Forum Coordinator/Co-Coordinator/Committee	_____	_____
Fall Conference Coordinator/Co-Coordinator/Committee	_____	_____
Director’s Fund Guardian/Controller/Trustee	_____	_____
Chartering of New Chapter	_____	_____

NEF Certifications earned to date:

- CIT
- CBT
- CDS
- CCA
- CIS
- EFP

<u>List Construction-related and/or Community Service Activities that the Nominee has chaired:</u>

Attach an essay in 300 words or less – why should this member be chosen for the honor of “NAWIC Future Leader of the Year”? *Please do not reveal the name of the member, region, city or chapter name in your essay.*



## NATIONAL ASSOCIATION OF WOMEN IN CONSTRUCTION GUIDELINES – LIFETIME ACHIEVEMENT

### **Purpose of Award:**

The Lifetime Achievement award was established to recognize outstanding efforts of a NAWIC member who has been actively involved throughout their NAWIC membership. This award may only be won once by a member.

### **Selection Process:**

The member can be nominated by an individual or chapter who may or may not be in the same chapter as nominee. Nominators are encouraged to contact nominee to ensure accuracy of application. All nomination forms received prior to the deadline will be numbered and reviewed for anonymity (no names, cities, regions or chapter numbers) and forwarded to a panel of judges, as selected by the award Chairman.

### **Criteria and Method of Judging:**

Nominees must have a minimum of 15 years of membership and be a member in good standing. Items to be covered on the nomination form and evaluated on a point system will be chapter, regional and national activities. Also included are construction related and community service activities. An essay of 300 words or less, submitted with the nomination form, will be awarded points at the discretion of the judges. The nominee awarded the highest number of points by all judges will be deemed the winner. In case of a tie, two awards would be made in that particular year.

### **Deadline and Return Information:**

All paperwork must be received by the NAWIC Office on or before June 1.

Mail forms to the NAWIC office at 327 S. Adams St. Fort Worth, TX 76104 or email to Beth Brooks at [bethb@nawic.org](mailto:bethb@nawic.org).

### **Ratings:**

- New Members Recruited
- National Officer/Board Positions
- Chapter Officer/Board Positions
- Chapter Committees
- Regional Committees
- National Committees
- Charter Member
- Attendance
- Other Positions
- NEF Certifications
- Other Activities
- Essay

### **Award:**

The NAWIC office will prepare and/or purchase appropriate award.

### **Notification and Announcement of Winners:**

Winners will be notified by the NAWIC President with announcement of the winners held until after the National Election results are announced.

### **Tips for Essay:**

- Do not include the criteria already on the application form. Make your essay stand out!
- Give details and specific examples as to why your nominee should win. Tell the committee how the nominee goes above and beyond normal participation. The selection committee is relying on your words and examples to “see” your nominee’s attributes and contributions.
- Share examples of how your nominee serves as a role model and/or mentor for others.
- Accomplishments that make an impact in our industry.
- Successful nominations have enough details to make the case for the nominee’s achievement.



# Lifetime Achievement Award

## Nomination Application Form

Committee Use Only
Nominee Code _____

*NOTE: The specific allocation of points per item is the method for scoring. Enter the amount for each activity served during entire NAWIC membership (i.e., Chapter President 3 times during membership, enter 3). It is important to correctly list the nominee's experience with the corresponding activities. Listing "served on all chapter committees and chaired most of them" will not be scored.*

Date Nominee Joined NAWIC \_\_\_\_\_ (Membership in one or more Chapters is included)

Nominee has been a member for at least 15 years and is a NAWIC member in good standing

How many members has nominee recruited since joining NAWIC? \_\_\_\_\_

Chapter Officer/Board Position Held:

President \_\_\_\_\_ Vice President \_\_\_\_\_ Secretary \_\_\_\_\_ Treasurer \_\_\_\_\_ Director \_\_\_\_\_ Other: \_\_\_\_\_

National Board Position Held:

President \_\_\_\_\_ Pres. Elect \_\_\_\_\_ Vice President \_\_\_\_\_ Secretary \_\_\_\_\_ Treasurer \_\_\_\_\_ Director \_\_\_\_\_

**Chapter Committees**

**Chaired**

**Member**

Bylaws	_____	_____
Professional Development & Education	_____	_____
Finance	_____	_____
Public Relations & Marketing	_____	_____
Membership	_____	_____
Mentoring	_____	_____
Safety & Health Awareness	_____	_____
WIC Week	_____	_____
Block Kids	_____	_____
CAD Design/Drafting	_____	_____
Others List: _____	_____	_____
_____	_____	_____
_____	_____	_____

**Chapter Sponsored Events**

**Attended**

_____	_____
_____	_____
_____	_____

**Regional Committees/Taskforce**

**Chaired**

**Member**

Professional Development & Education	_____	_____
Public Relations & Marketing	_____	_____
Membership	_____	_____
Mentoring	_____	_____
Safety & Health Awareness	_____	_____
WIC Week	_____	_____
Block Kids	_____	_____
Cad Design / Drafting	_____	_____
Others (List): _____	_____	_____



**National Committees/Taskforce**

Professional Development & Education

Public Relations & Marketing

Membership

Mentoring

Safety & Health Awareness

WIC Week

Block Kids

Cad Design / Drafting

Others (List): \_\_\_\_\_

\_\_\_\_\_

**Chaired**

\_\_\_\_\_

\_\_\_\_\_

\_\_\_\_\_

\_\_\_\_\_

\_\_\_\_\_

\_\_\_\_\_

\_\_\_\_\_

\_\_\_\_\_

\_\_\_\_\_

\_\_\_\_\_

**Member**

\_\_\_\_\_

\_\_\_\_\_

\_\_\_\_\_

\_\_\_\_\_

\_\_\_\_\_

\_\_\_\_\_

\_\_\_\_\_

\_\_\_\_\_

\_\_\_\_\_

\_\_\_\_\_

Nominee has attended the following Regional/National functions:

Annual Conference \_\_\_\_\_

Regional Fall Conference \_\_\_\_\_

Regional Forum \_\_\_\_\_

Other: \_\_\_\_\_

Has the nominee served in the following positions:

**Chaired**

**Member**

Forum Coordinator/Co-Coordinator/Committee

\_\_\_\_\_

\_\_\_\_\_

Fall Conference Coordinator/Co-Coordinator/Committee

\_\_\_\_\_

\_\_\_\_\_

Director's Fund Guardian/Controller/Trustee

\_\_\_\_\_

\_\_\_\_\_

Chartering of New Chapter

\_\_\_\_\_

\_\_\_\_\_

NEF Certifications earned to date:

- CIT     CBT     CDS     CCA     CIS     EFP

List Construction-related and/or Community Service Activities that the Nominee has chaired:


Attach an essay in 300 words or less – why should this member be chosen for the honor of "NAWIC Member of the Year"? *Please do not reveal the name of the member, cities, region or chapter name in your essay.*



**NATIONAL ASSOCIATION OF WOMEN IN CONSTRUCTION  
GUIDELINES - MEMBER OF THE YEAR**

**Purpose of Award:**

The Member of the Year award was established to recognize outstanding efforts of a NAWIC member who has been actively involved October 2016 through September 2017. This award may only be won once by a member.

**Selection Process:**

The member can be nominated by an individual or chapter who may or may not be in the same chapter as nominee. Nominators are encouraged to contact nominee to ensure accuracy of application. All nomination forms received prior to the deadline will be numbered and reviewed for anonymity (no names, cities, region or chapter numbers) and forwarded to a panel of judges, as selected by the award Chairman.

**Criteria and Method of Judging:**

All nominees must be a member in good standing. Items to be covered on the nomination form and evaluated on a point system will be chapter, regional and national activities. Also included are construction related and community service activities. An essay of 300 words or less, submitted with the nomination form, will be awarded points at the discretion of the judges. The nominee awarded the highest number of points by all judges will be deemed the winner. In case of a tie, two awards would be made in that particular year.

**Deadline and Return Information:**

All paperwork must be received by the NAWIC Office on or before June 1.

Mail forms to the NAWIC office at 327 S. Adams St. Fort Worth, TX 76104 or email to Beth Brooks at [bethb@nawic.org](mailto:bethb@nawic.org).

**Ratings:**

- New Members Recruited
- Chapter Officer/Board Positions
- Chapter Committees
- Regional Committees
- National Committees
- Charter Member
- Attendance
- Other Positions
- NEF Certifications
- Other Activities
- Essay

**Award:**

The NAWIC office will prepare and/or purchase appropriate award.

**Notification and Announcement of Winners:**

Winners will be notified by the NAWIC President with announcement of the winners held until after the National Election results are announced.

**Tips for Essay:**

- Do not include the criteria already on the application form. Make your essay stand out!
- Give details and specific examples as to why your nominee should win. Tell the committee how the nominee goes above and beyond normal participation. The selection committee is relying on your words and examples to “see” your nominee’s attributes and contributions.
- Share examples of how your nominee serves as a role model and/or mentor for others.
- Accomplishments that make an impact in our industry.
- Successful nominations have enough details to make the case for the nominee’s achievement.



# Member of the Year Nomination Application Form

Committee Use Only Nominee Code _____
--

*NOTE: The specific allocation of points per item is for current year activities only and is the method for scoring. Check each field where applicable for the current NAWIC year. It is important to correctly list the nominee's experience with the corresponding activities. Listing "served on all chapter committees and chaired most of them" will not be scored.*

Date Nominee Joined NAWIC \_\_\_\_\_ (Membership in one or more Chapters is included)

Nominee is a NAWIC member in good standing

How many members has nominee recruited for the 2016-2017 year? \_\_\_\_\_

Chapter Officer/Board Position Held for 2016-2017 Year:

President    Vice President    Secretary    Treasurer    Director    Other: \_\_\_\_\_

National Board Position held for 2016-2017 year:

President    Officer    Director

**Chapter Committees**

	<b>Chaired</b>	<b>Member</b>
Bylaws	_____	_____
Professional Development & Education	_____	_____
Finance	_____	_____
Public Relations & Marketing	_____	_____
Membership	_____	_____
Mentoring	_____	_____
Safety & Health Awareness	_____	_____
WIC Week	_____	_____
Block Kids	_____	_____
CAD Design/Drafting	_____	_____
Others List: _____	_____	_____
_____	_____	_____
_____	_____	_____

**Chapter Sponsored Events**

	<b>Attended</b>
_____	_____
_____	_____
_____	_____
_____	_____

**Regional Committees/Taskforce**

	<b>Chaired</b>	<b>Member</b>
Professional Development & Education	_____	_____
Public Relations & Marketing	_____	_____
Membership	_____	_____
Mentoring	_____	_____
Safety & Health Awareness	_____	_____
WIC Week	_____	_____
Block Kids	_____	_____
Cad Design / Drafting	_____	_____
Others (List): _____	_____	_____
_____	_____	_____



**National Committees/Taskforce**

**Chaired**

**Member**

Professional Development & Education	_____	_____
Public Relations & Marketing	_____	_____
Membership	_____	_____
Mentoring	_____	_____
Safety & Health Awareness	_____	_____
WIC Week	_____	_____
Block Kids	_____	_____
Cad Design / Drafting	_____	_____
Others (List): _____	_____	_____
_____	_____	_____

Nominee has attended \_\_\_\_\_ out of \_\_\_\_\_ chapter meetings for the year 2016-2017.

Nominee has attended the following Regional/National functions for the year 2016-2017:

- Annual Conference
- Regional Fall Conference
- Regional Forum
- Other: \_\_\_\_\_

Has the nominee served in the following positions:

	<b><u>Chair</u></b>	<b><u>Member</u></b>
Forum Coordinator/Co-Coordinator/Committee	_____	_____
Fall Conference Coordinator/Co-Coordinator/Committee	_____	_____
Director's Fund Guardian/Controller/Trustee	_____	_____
Chartering of New Chapter	_____	_____

NEF Certifications earned to date:

- CIT     CBT     CDS     CCA     CIS     EFP

<u>List Construction-related and/or Community Service Activities that the Nominee has chaired:</u>

Attach an essay in 300 words or less – why should this member be chosen for the honor of “NAWIC Member of the Year”? *Please do not reveal the name of the member, cities, region or chapter name in your essay.*



### Introduction:

NAWIC's Safety & Health Awareness Committee is pleased to offer the Safety Excellence Award to distinguish NAWIC member companies who recognize safety as a corporate value and commitment. These companies have implemented excellent safety and health programs, and innovative solutions for creating strong safety cultures within their organizations. The means of achieving this include owner/upper management commitment, proactive safety and health programs, consistent enforcement policies, employee training, management committee initiatives, and program implementation creativity/innovation.

### Changes:

In the past, the Safety Excellence Award was given to the top three-member companies at the chapter level, the regional level, and the national level, with a progressive winning process. In 2018 we are doing away with the progressive process and allowing any company who qualifies to complete and turn in their application directly to the National committee for the National Safety Excellence Award. We greatly encourage the Chapters and Regions to continue with Safety Excellence Awards at their levels with the understanding that these will not follow the old progression up to the National Level.

### Eligibility:

Eligible participants must employ a NAWIC member. Completed applications must be submitted by **March 31, 2018** directly to the Safety & Health Awareness Committee. Send applications to [safety@nawic.org](mailto:safety@nawic.org). The top three winners will be awarded at the 2018 Annual Conference in Orlando, FL. Awards are based on leading indicators, not lagging indicators. However, this year the National Committee is asking for your organization's lagging indicators in the form of OSHA 300 logs, EMR rate, DART Incident Rate and Recordable Case Rate for use in the event of a tie. Proper business letter etiquette such as spelling, punctuation, grammar, and formatting will also be used for scoring in the event of a tie.

### Questions:

Contact Leah Curran, National Safety & Health Chair at [lcurran@trisupplyandequipment.com](mailto:lcurran@trisupplyandequipment.com).

Applicant (Member Company):	
NAWIC Member:	
Chapter Name & Number:	
Region:	

NAWIC CHAPTER NUMBER _____ REGION _____
--

APPLICANT: _____ (Company Name)
------------------------------------

## SECTION ONE: Program Assessment Checklist

Select 'Yes', 'No' or 'Not Applicable' for each of the items. There may be items in the checklist that do not apply to your company. If so, the N/A response would be appropriate.

Yes	No	N/A	
			Written safety and health policy signed by the company principal
			Your location employs a safety manager or director
			Have an annual safety and health budget, and budget(s) for each job
			Company policy allows field employees authority to "shut down" a job or operation because of a hazard that presents imminent danger to employees
			Safety & health policies or requirements are written into contracts to require subcontractors to meet your safety requirements
			Utilize a pre-qualification safety and health-screening method to select subcontractors, suppliers or vendors
			Require a site-specific orientation for all subcontractor, vendor, support personnel prior to project access
			Provide contractual provisions for termination of contractors for unsatisfactory safety performance
			All new hires are trained on how to report injuries, unsafe conditions and work practices
			New hire orientation includes location of first-aid kits/facilities and use/care of personal protective equipment (PPE)
			Have personnel on each job trained in first-aid and CPR
			Supervisors w/OSHA extensive (i.e. 10/30hr) hazard recognition/competent person training certification
			Competent person safety training applicable for your business (scaffolds, trenching, excavations, etc.)
			Your location has a written safety plan and emergency crisis response plan
			Site-specific written safety plan (fall protection, confined space, etc.)
			Site-specific written emergency/crisis response plan
			Conduct weekly safety meetings (tool box talks) on site
			Maintain safety and health recordkeeping requirements
			Accident reports are reviewed regularly to determine corrections
			Require safety and health inspections of each jobsite at least weekly by supervisor
			Written drug and alcohol prohibition policy
			Drug and alcohol testing protocol (pre-employment, post-accident, etc.)
			Inclusion of subcontractors in testing policy
			"No texting/hands free" phone policy while operating company owned vehicles
			Defensive driving training/program
			Provide written material and signs in language other than English
			Provide safety training in a language other than English
			A health promotion program is available to employees and their families (smoking, weight loss, heart health, etc.)
			Active participation in a construction-related association safety committee
			Attend local or regional safety seminars

**Provide an explanation for all "N/A" responses on the next page.**

NAWIC CHAPTER NUMBER _____
REGION _____

APPLICANT: _____ <div style="text-align: right; font-size: small;">(Company Name)</div>
--

# NAWIC 2018 SAFETY EXCELLENCE AWARD

Use this page to provide an explanation to any 'N/A' responses from the Program Assessment Checklist.

NAWIC CHAPTER NUMBER \_\_\_\_\_  
REGION \_\_\_\_\_

APPLICANT: \_\_\_\_\_  
(Company Name)



## SECTION TWO: Tell NAWIC about Your Safety Program

**This is your opportunity to demonstrate that “special something” that sets your company apart from the others. Answer the following questions using no more than one page of Times New Roman, 12 Font, per question.**

1. Describe your safety program. What sets your safety program apart from others? Include examples which demonstrates hard work, persistence, innovation, teamwork, and the passion for continuously improving your safety management systems above and beyond minimum state and federal safety standards.
  
2. What single element of your safety process was the most critical to your success in safety over the past 3 years and why? Describe any new systems, procedures, or elements (if any) that were integrated into your overall safety process during the past year.
  
3. Describe methods used to recognize and/or reward employees for safety performance.

## SECTION THREE: TIE-BREAKER

**In the event of a tie, provide the following information:**

OSHA 300/300A Log Information:	2016	2015	2014
Fatalities (300 column G):			
Lost Time Injuries (300 column H):			
Days Away and Restricted Work Cases (300 column H and I):			
Total Recordable Cases (300 column G+H+I+J):			
Annual Average Number of Employees (300A):			
Total Hours Worked (300A):			

	2016:	2015:	2014:
EMR:			
RCR ((total # of cases x 200,000)/total hours worked):			
DART ((total # cases away or restricted x 200,000)/total hours worked):			

**Reviewed by:** \_\_\_\_\_  
 Signature

\_\_\_\_\_

Printed Name/Title of Company's/Location's Most Senior Executive

\_\_\_\_\_

Date

NAWIC CHAPTER NUMBER _____ REGION _____
--

APPLICANT: _____ <div style="text-align: right; font-size: small;">(Company Name)</div>
--



# NATIONAL ASSOCIATION OF WOMEN IN CONSTRUCTION

327 S. Adams St. • Fort Worth, Texas 76104-1002 • (800) 552-3506  
(817) 877-5551 • Fax (817) 877-0324 • nawic@nawic.org • www.nawic.org

## NATIONAL BOARD OF DIRECTORS

### PRESIDENT

Catherine D. Schoenenberger  
Granite State Chapter, N.H.

### PRESIDENT-ELECT

Dove Sifers-Putman, CBT  
Charlotte, N.C. Chapter

### VICE PRESIDENT

Diane I. Mike, CBT  
Fort Worth, Texas Chapter

### SECRETARY

Jill Hanson, CIT  
Tampa, Fla. Chapter

### TREASURER

Anne Pfleger, CIT  
Lima Ohio Area Chapter

### IMMEDIATE PAST PRESIDENT

Connie Lejpard, CIT  
Central Missouri Chapter

### MIDWEST REGION

Vickie J. Nickel, CIT  
Greater Kansas City, Mo. Chapter

### NORTH CENTRAL REGION

Jenny L. Mangas  
Cincinnati, Ohio Chapter

### NORTHEAST REGION

Doreen Bartoldus, PE., CCM  
Lower Hudson, N.Y. Chapter

### PACIFIC NORTHWEST REGION

Louline Mitchell  
San Francisco, Calif. Chapter

### PACIFIC SOUTHWEST REGION

Elizabeth M. Teramoto, CIT  
Las Vegas, Nev. Chapter

### SOUTH ATLANTIC REGION

Kristey Stewart, CIT  
Durham, N.C. Chapter

### SOUTH CENTRAL REGION

Laurie Jimenez, CBT  
Houston, Texas Chapter

### SOUTHEAST REGION

Karen Hager, CBT, CIT  
Greater Orlando, Fla. Chapter

### NAWIC OFFICE

EXECUTIVE VICE PRESIDENT  
Beth Brooks, CAE  
Fort Worth, Texas

Dear Employer:

No matter what size your organization, your female employees play an essential role in your success. Relevant education benefits not only your employee, but your business as well. An educated employee is an empowered employee, an employee who can perform her responsibilities with ease or who can step into leadership when needed.

Once a year, the National Association of Women in Construction (NAWIC) holds their national conference to offer valuable education that helps women move to the next level in their careers.

Our 2018 Annual Conference will be held in Orlando on August 15-18. These 2 ½ days in Florida are the perfect opportunity for your employee to gain knowledge about subjects in the personal and professional development arenas, and learn about the construction industry’s best practices. We’ll also explore the industry’s hottest topics, such as:

- Risk Management
- Modular Construction
- Sexual Harassment
- Diversity and Workforce Development
- Drones on the Jobsite
- Lean Construction
- Succeeding in a Male-Dominated Industry

The Annual Conference offers:

- 19 education breakout sessions
- 2 general sessions with industry panels on diversity and industry awareness
- 2 keynote speakers—negotiation expert Linda Swindling and Kayleen McCabe, the star of DIY Network’s “Rescue Renovation”
- Pre-conference training with on-site testing for NEF Estimating and Scheduling certification
- “The Neighborhood,” which is the center of activity between sessions. Here, participants can network, visit vendor tables and take advantage of pop-up education.

I encourage you to support your employee by sending her to the NAWIC Annual Conference. This investment will create significant returns for your company throughout the years. Thank you for your consideration.

Sincerely,

Catherine Schoenenberger  
NAWIC National President  
President, Stay Safe Traffic Products, Inc.

**CORE PURPOSE:** To enhance the success of women in the construction industry  
**CORE VALUES:** Believe. Persevere. Dare.

National Association  
of Women in Construction  
327 S. Adams St.  
Fort Worth, Texas 76104

PRESORTED  
FIRST-CLASS MAIL  
U.S. POSTAGE  
**PAID**  
FORT WORTH, TX  
PERMIT 1905



**INSIDE:** A Sneak Peek of  
What's in Store for the  
Annual Conference in August!

Sponsored by:



.....  
**EDUCATION HIGHLIGHTS**

- 19 Education Breakout Sessions
- 2 General Sessions with Industry Panels on Diversity and Industry Awareness
- Two Keynote Speakers
- Pop-up Education
- Pre-Conference Training Courses and On-Site Testing

**Don't Wait – Make Plans  
to Join Us Today!**

.....  
**MARK YOUR CALENDAR  
FOR THE 2018 NAWIC  
ANNUAL CONFERENCE,  
AUG. 15-18 IN ORLANDO!**  
.....

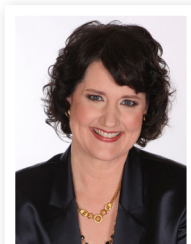


# 2018 ANNUAL CONFERENCE DELIVERS EXCITING NEW CHANGES



This year's Annual Conference has been revamped, offering you more education, activities and networking opportunities than ever before! The 2 ½ day conference is designed for all women in construction, NAWIC members and non-members alike.

## HERE'S A SAMPLE OF WHAT YOU CAN EXPECT AUGUST 15-18 IN ORLANDO:



### OPENING KEYNOTE

"When It Helps to be a Smart Ask"  
Presented by negotiation expert  
**Linda Swindling**



### CLOSING KEYNOTE

"Following Your Passion  
for the Trades"  
Presented by  
**Kayleen McCabe**,  
the star of DIY Network's  
"Rescue Renovation"

## NEW AND UPDATED EVENTS

- **Two General Sessions with Industry Panels:**  
Construction leaders come together to discuss diversity and industry awareness.
- **The Neighborhood:** The Neighborhood is the center of activity between sessions. Here, you can meet a friend, grab a dessert, enjoy pop-up education, and buy from chapter and vendor tables.
- **Awards Gala and After-Party:** An all-new Awards Gala program and a fun, surprise After-Party.

## NEW TRAINING

- **NEF Estimating and Scheduling (ESP) Certification:**  
Take the prep course and then do testing on-site.
- **Chapter Leadership Training:**  
For Chapter Officers

## Registration Opens March 1

- Early Bird Rate: March 1-April 30
  - Members: \$635
  - Non-Members: \$735
- Go to [NAWIC.org](http://NAWIC.org) > Annual Conference tab

## Hotel — Reserve Your Room Now!

Hilton Orlando Lake Buena Vista  
1751 Hotel Plaza Blvd., Lake Buena Vista, FL 32830  
407.827.4000 (main number)

Room Rates: \$145 (for up to 4 people)

By phone: Call 800.782.4414 and say you're with NAWIC.

Online: [NAWIC.org](http://NAWIC.org) > Annual Conference



Durham, NC • Raleigh, NC • Greenville, SC • Piedmont, NC  
 Columbia, SC • Charlotte, NC • Greater Tidewater, VA  
 Richmond, VA • Asheville, NC • Fayetteville, NC  
 Roanoke, VA • Greater Greenville, NC

# The National Association of Women in Construction South Atlantic Region



## Report of the NAWIC Membership Committee

March 1, 2018

Nichole M. Kopenhaver, CIT and Carol Chapman, CIT

[nkopenhaver@mccroxyconstruction.com](mailto:nkopenhaver@mccroxyconstruction.com)    [carolchapman13@gmail.com](mailto:carolchapman13@gmail.com)

The SAR Membership Committee is pumped for the upcoming Spring Forum in Durham, NC April 6-7, 2018! We are looking forward to seeing everyone there. Our committee will have some awards to give out to some hardworking chapters/members.



### RENEWALS

Don't forget to keep your unrenewed members on the radar. We still have renewals going on in our region. Some unrenewed members take a little longer and need a little nudge. We understand some unrenewed members are people who are not able to renew or no longer in the industry, so if you have time just a quick email to say hi and miss you. Keeping them in loop will keep NAWIC on their mind. They can potentially be an advocate of our organization.

## South Atlantic Region Membership Renewal Report 2/28/2018

Chapter	9/30/2017 Ending Total Members	To Date Renewals	To Date Renewals %
Durham # 83	39	28	71.79%
Raleigh # 92	16	12	75.00%
The Piedmont # 109	16	15	93.75%
Charlotte # 121	56	48	85.71%
Asheville # 154	15	12	80.00%
Fayetteville # 168	11	9	81.82%
Gr Greenville, NC # 335	16	12	75.00%
Columbia # 113	79	54	68.35%
Greenville, SC # 104	21	17	80.95%
Gr Tidewater # 137	39	33	84.62%
Richmond # 141	63	53	84.13%
Roanoke Valley # 226	18	15	83.33%
TOTALS	389	308	79.18%

## RECRUITMENT

**SAR Top Recruiter** prize spot is tied between **Andrea Ofori-Boadu** and **Nichole Kopenhaver, CIT** with 4 new members to date each this 2017/2018 NAWIC year. Great job to all members who have been hard at work recruiting this year!

Awesome work to **The Piedmont Chapter # 109** for still holding the spot for the **SAR Top Recruiting Chapter** by percentage to date with 31.82% increase! These ladies may be enjoying the prize award of a chapter personalized promotional roll up banner if they can maintain the lead til **deadline** of **3/15/2018**.

Chapter	To Date Renewals	New Members	Membership To Date	Chapter Top Recruiter %
Durham # 83	28	4	32	12.50%
Raleigh # 92	12	1	13	7.69%
The Piedmont # 109	15	7	22	31.82%
Charlotte # 121	48	9	57	15.79%
Asheville # 154	12	3	15	20.00%
Fayetteville # 168	9	0	9	0.00%
Gr Greenville, NC # 335	12	0	12	0.00%
Columbia # 113	54	5	59	8.47%
Greenville, SC # 104	17	2	19	10.53%
Gr Tidewater # 137	33	4	37	10.81%
Richmond # 141	53	5	58	8.62%
Roanoke Valley # 226	15	0	15	0.00%
M-A-L	1	1	2	
TOTALS	309	41	350	

## SAR Membership Conference Calls

The committee would like to thank the chapter Membership Committee Chair(s) and Presidents who participated in our SAR Membership conference call on February 7<sup>th</sup>. Our mission is for these sessions to be a resource for chapter membership chairs to gain larger understanding of the role of membership, to assist in bridging communication between SAR chapters and platform to share ideas and ask questions.


Please contact if you would like a copy of the handout provided, have questions, or would like to provide feedback on the call. What would you like to see as a topic in the next call?

## NAWIC National Membership/Marketing Webinars:

March 14, 2018 – Leveraging WIC Week to Boost Membership

May 9, 2018 – Mid-Year Review

July 11, 2018 – Planning Ahead: AMEC 2018



# NAWIC

## *Builds* Leaders

Your Education. Your Career. Your Future.

Help us in welcoming our new South Atlantic Region members that joined in February 2018!

**Chapter 83 Durham**  
**April Frye**  
ABC Carolinas

**Chapter 109 The Piedmont**  
**Tess Sekhar**  
Frank L. Blum Construction Co.

**Chapter 113 Columbia**  
**Shawna Jordan**  
Binswanger Glass

**Megan Hobbs**  
South Carolina 811

**Chapter 121 Charlotte**  
**Karla Chavez**  
Student

**Patricia Gibboni**  
**Karin Stoner**  
Kirlin Mechanical Services, LLC

**Teri Kelly-Vuurmans**  
**Amy Schlierf**  
United Rentals

**Chapter 141 Richmond**  
**Debby Spillman**  
Rental Works

**Diane Coughlin**  
HHH Hunt Homes

**NAWIC**  
*Builds*  
Leaders



Your Education. Your Career. Your Future.

Help us in welcoming our new  
South Atlantic Region members that  
joined in February 2018!

**Chapter 83 Durham**

**April Frye**

ABC Carolinas

**Chapter 109 The Piedmont**

**Tess Sekhar**

Frank L. Blum Construction Co.

**Chapter 113 Columbia**

**Shawna Jordan**

Binswanger Glass

**Megan Hobbs**

South Carolina 811

**Chapter 121 Charlotte**

**Karla Chavez**

Student

**Patricia Gibboni**

**Karin Stoner**

Kirlin Mechanical Services, LLC

**Teri Kelly-Vuurmans**

**Amy Schlierf**

United Rentals

**Chapter 141 Richmond**

**Debby Spillman**

Rental Works

**Diane Coughlin**

HHHunt Homes



## The Piedmont Chapter #109 - NAWIC

### Board of Directors for 2017-2018

President	Greta Gardner	<a href="mailto:ggardner@davieconstruction.com">ggardner@davieconstruction.com</a>
Vice President	Jeanne Callicutt	<a href="mailto:jcallicutt@eccseic.com">jcallicutt@eccseic.com</a>
Secretary	Caroline Carpenter	<a href="mailto:caroline@eccseic.com">caroline@eccseic.com</a>
Treasurer	Anne Hutchinson	<a href="mailto:afhutchinson@triad.rr.com">afhutchinson@triad.rr.com</a>
Immediate Past President	Denese Sanders	<a href="mailto:denese1964@yahoo.com">denese1964@yahoo.com</a>
Directors	Amy Mong	<a href="mailto:amy.mong@wandwcrane.com">amy.mong@wandwcrane.com</a>
	Dawn Dwyers	<a href="mailto:ddwyer@lomaxconstruction.com">ddwyer@lomaxconstruction.com</a>
Parliamentarian	Dottie Brogdon	<a href="mailto:dbrogdon@triad.rr.com">dbrogdon@triad.rr.com</a>

### Committees for 2017 - 2018

Standing Committees	Chair	Contact E-mail	Committee Members
Finance	Anne Hutchinson	<a href="mailto:afhutchinson@triad.rr.com">afhutchinson@triad.rr.com</a>	Greta Gardner & Denese Sanders
Membership - Roster	Amy Mong	<a href="mailto:amy.mong@wandwcrane.com">amy.mong@wandwcrane.com</a>	Brenda Smith
Professional Development & Education	Jeanne Callicutt	<a href="mailto:jcallicutt@eccseic.com">jcallicutt@eccseic.com</a>	Stephanie Eaton
*Speakers/Programs			
*Scholarships	Caroline Carpenter	<a href="mailto:caroline@eccseic.com">caroline@eccseic.com</a>	Stephanie Eaton
Special Committees and Assignments	Chair	Contact E-mail	Committee Members
Attendance Record	Dottie Brogden	<a href="mailto:dbrogdon@triad.rr.com">dbrogdon@triad.rr.com</a>	
Audit	Dottie Brogden	<a href="mailto:dbrogdon@triad.rr.com">dbrogdon@triad.rr.com</a>	
Block Kids	Denese Sanders	<a href="mailto:denese1964@yahoo.com">denese1964@yahoo.com</a>	Dottie Brogden
Bylaws & Parliamentarian	Dottie Brogden	<a href="mailto:dbrogdon@triad.rr.com">dbrogdon@triad.rr.com</a>	
N/A Chapter Excellence	Greta Gardner	<a href="mailto:ggardner@davieconstruction.com">ggardner@davieconstruction.com</a>	
Friendship	Shelby Hutchens		
Inspiration	Linda Trantham	<a href="mailto:ltrantham@contractorectors.com">ltrantham@contractorectors.com</a>	
Installation of 2018-2019 Board			
Meeting Locations/Meals	Dottie Brogden	<a href="mailto:dbrogdon@triad.rr.com">dbrogdon@triad.rr.com</a>	
Meeting Notices/Reservations	Jeanne Callicutt	<a href="mailto:jcallicutt@eccseic.com">jcallicutt@eccseic.com</a>	Dottie Brogden
Name Tags/Badges	Greta Gardner	<a href="mailto:ggardner@davieconstruction.com">ggardner@davieconstruction.com</a>	
Nominating			
N/A Teammates	Linda Trantham	<a href="mailto:ltrantham@contractorectors.com">ltrantham@contractorectors.com</a>	
Ways & Means/Ice Breakers/Fundraiser	Amy Mong	<a href="mailto:amy.mong@wandwcrane.com">amy.mong@wandwcrane.com</a>	
WIC Week	Denese Sanders	<a href="mailto:denese1964@yahoo.com">denese1964@yahoo.com</a>	
PR & Marketing	Brenda Smith	<a href="mailto:bsmith@trane.com">bsmith@trane.com</a>	
P.O. Box/USPS Mail	Brenda Smith	<a href="mailto:bsmith@trane.com">bsmith@trane.com</a>	
Social Media- Website, Facebook, Public Relations, Photographer, Communications	Amy Mong	<a href="mailto:amy.mong@wandwcrane.com">amy.mong@wandwcrane.com</a>	Greta Gardner
News Releases			

Regional Committee Chairs	
Nichole Kopenhaver	<a href="mailto:Nkopenhav@mccroryconstruction.com">Nkopenhav@mccroryconstruction.com</a>
Melody Mabe	<a href="mailto:mmabe@silncva.com">mmabe@silncva.com</a>
Regional Committee Chairs	
Susan States	<a href="mailto:ssates9@comcast.net">ssates9@comcast.net</a>
Kim Cameron	<a href="mailto:Kcameron@WOODFOREST.com">Kcameron@WOODFOREST.com</a>
Dianne Hilterbrant	<a href="mailto:Dianne.hilterbrant@gmail.com">Dianne.hilterbrant@gmail.com</a>
Jenny Therrien-Davis	<a href="mailto:jdavis@noahent.com">jdavis@noahent.com</a>
Debbie Edwards	<a href="mailto:debbie@premierlighting.com">debbie@premierlighting.com</a>
Rhonda Baker	<a href="mailto:rhn2859@sc.rr.com">rhn2859@sc.rr.com</a>
Samantha Hedgepath	<a href="mailto:samantha.hedgepath@gmail.com">samantha.hedgepath@gmail.com</a>
Chrissie Slater	<a href="mailto:nawic.vpresident141@gmail.com">nawic.vpresident141@gmail.com</a>